



# Introduction to LGS Business Consulting Services

June 2018

31

Years of



BUSINESS  
EXCELLENCE

# Values

- Uncompromising **integrity**
- Commercial **agility**
- Operational **efficiency**
- Service **quality**
- People **development**



US \$ 1 b

Revenue 2017  
Significant Revenue  
Growth since 1987

Publicly traded in the



Cyprus Stock  
Exchange

as a member of the

FTSE/CySE20  
Index

3 Divisions

Distribution  
Services  
Water. Power. Gas



800

Logicom employees  
worldwide

270 people in Cyprus



25+ countries

of operation

PHYSICAL PRESENCE in

16 Countries



## Partnerships

With industry leaders such  
as:



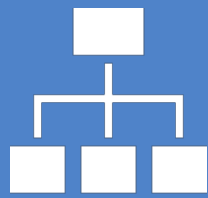
10,000+

Customers in 30 countries



# 4

Business Units



Sales & Business  
Development,  
Accounting, Operations

- Business Solutions and Services
- Technology Solutions and Services
- CA South Eastern Europe & RCIS
- Business Consulting Services

## Partnerships

With industry leaders such as:



# 20+

Countries coverage



## Logicom Solutions



# US \$ 30+ m

Revenue 2017

# ~ 100

Employees



Serving Customers in:

- Government
- Utilities
- Telecommunications
- Energy
- Banking
- Insurance
- Retail
- Shipping



# Business Consulting Services

4



Digital  
Transformation  
Services



Analytics and  
Data



Information  
Security



# Business Consulting Services

5



## Digital Strategy:

- Strategy and Vision
- Culture
- Organization
- Capabilities

Customer Experience/Journey Enhancement

Internet of Things



Identify sources of new business value

Expand the data ecosystem

Build models for trusted insight

- Descriptive Analytics and BI
- Predictive Analytics
- Prescriptive Analytics
- AI and Machine Learning

Optimize organization and governance



Business Impact Analysis

Disaster Recov./ Business Continuity Planning & Management

Ethical Hacking (Penetration Testing)

Information Security Gap Analysis

Networking and Information Security (NIS) Directive consulting

Risk Assessment services

Vulnerability Assessment services

GDPR Services

- Gap Analysis
- Implementation Advice

**Thank you**