

# ENABLING ORGANIZATIONS DIGITAL FUTURE THROUGH INNOVATIVE SOLUTIONS

**Pambos Charalambous**

Director, Sales and Business Development



# Logicom Solutions

## Our vision:

International ICT  
provider, offering  
innovative products &  
versatile services to  
clients

## Our Strategy:

Build intelligent  
integrated solutions  
that address our  
clients' challenges

Revenue:  
€ 32+M  
Continuous  
Growth

Member of  
LOGICOM  
Group  
€ 800M Rev  
700 employees

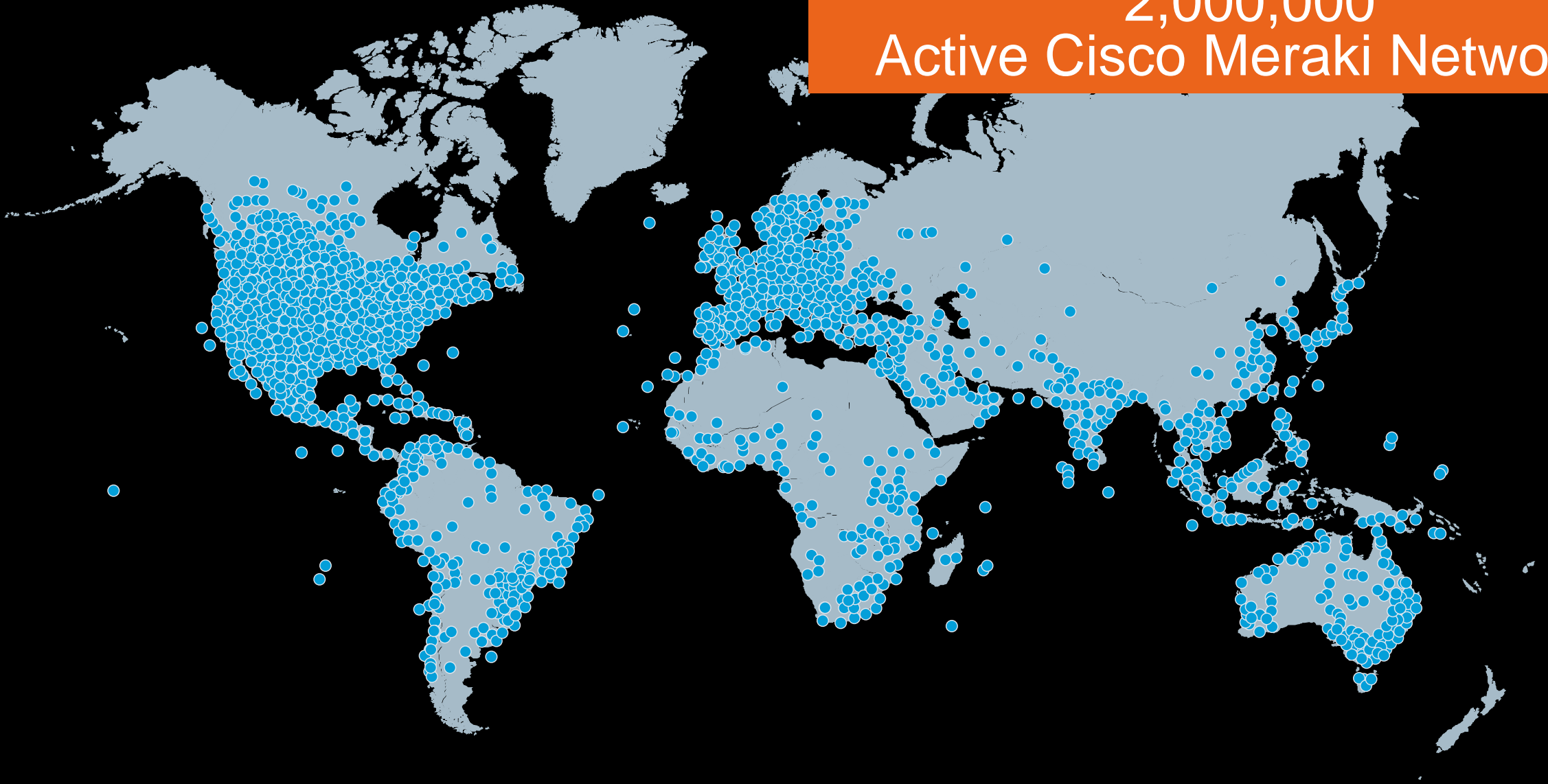
**CISCO GOLD  
PARTNER**

# WiFi4EU – Joint Solution CYTA & LGS

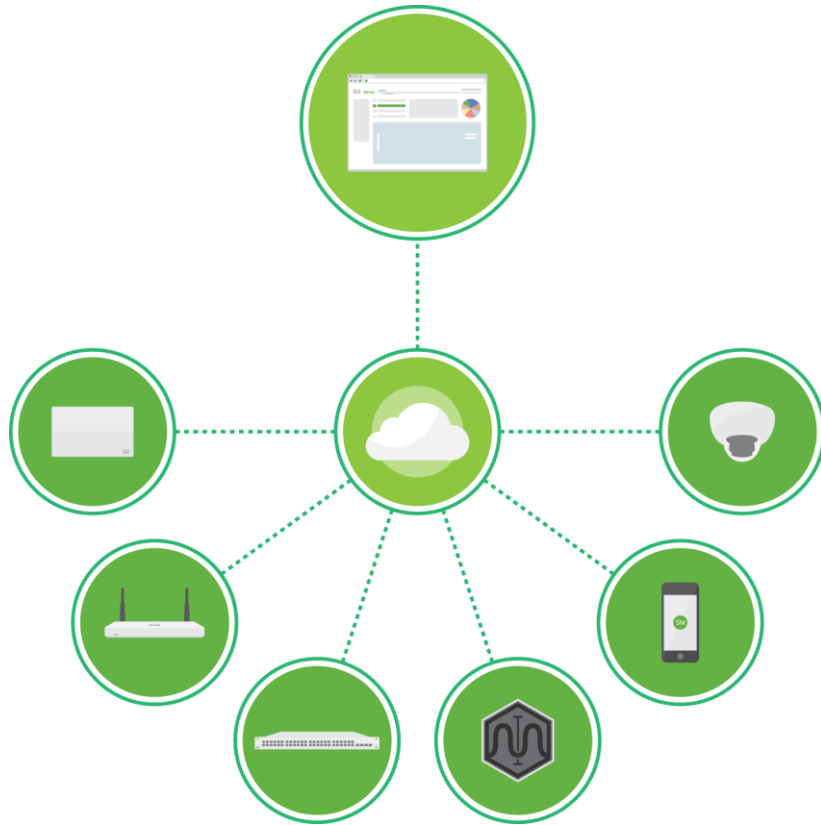


# Why Meraki

2,000,000  
Active Cisco Meraki Networks



# Simplifying across IT with Cloud Management



## A complete cloud managed IT solution

Wireless, switching, security, SD-WAN, intelligent network insights, endpoint management, and security cameras

Integrated hardware, software, and cloud services

## Leader in cloud-managed IT

Among Cisco's fastest growing portfolios

350k+

Unique customers

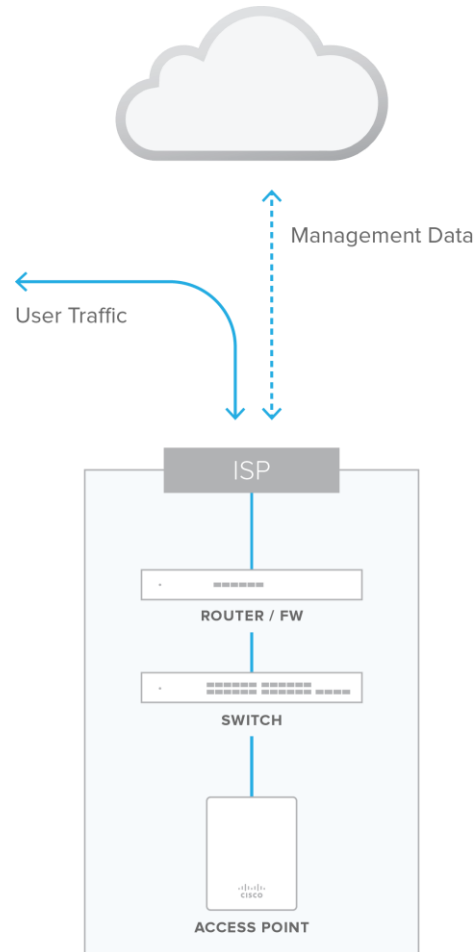
4.5M+

Meraki devices  
online

25M+

API calls  
per day

# Cloud Management



## Scalable

- Unlimited throughput, no bottlenecks
- Add devices or sites in minutes

## Reliable

- Highly available cloud with multiple datacenters
- Network functions even if connection to cloud is interrupted
- 99.99% uptime SLA

## Secure

- No user traffic passes through cloud
- Create and maintain HIPAA & PCI compliant networks
- 3rd party security audits, daily penetration testing
- Automatic firmware and security updates (user-scheduled)

Reliability and security information at [meraki.cisco.com/trust](https://meraki.cisco.com/trust)

# Intuitive Web-Based Dashboard

Client fingerprints

Single pane of glass IT management

Real-time control

Site-wide search

Client location

L7 application visibility

Remote tools

The screenshot displays the Cisco Meraki 'Clients - Meraki Dashboard' interface. The left sidebar contains navigation links for ORGANIZATION (Cisco Meraki), NETWORK (Meraki San Francisco), and various device types (Network-wide, Switch, Wireless, Systems manager, Phones, Cameras, Organization). The main content area shows details for a specific client, including status, SSID, access point, and user information. A map view shows the client's location on a floor plan. Below the map is a usage graph for the last day, showing a peak in traffic around 14:00. To the right of the graph is a pie chart showing application usage. At the bottom, there are sections for Policy (Device policy, Bandwidth, Layer 3 firewall, Layer 7 firewall, Traffic shaping) and Network (IPv4 address, IPv6 address, MAC address, VLAN). A 'Ping' section is also visible on the right side of the bottom row.



# Real Benefits of the solution offering

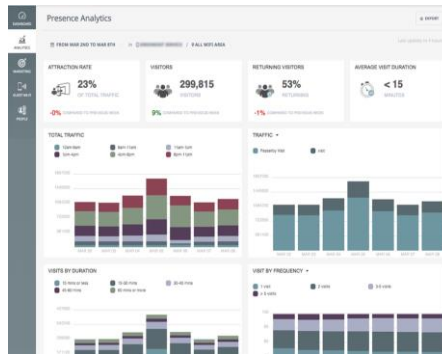
- CYTA and Logicom Solutions - Total One-Stop solution offering
- Reduced Management Burden for IT
- Access to a Complete Feature Set Out of the Box
- Sustained 'Feature Velocity'
- Capabilities Built Specifically for the Cloud
- Anywhere, Anytime Network Access
- Embedded Security by design



# Solutions built on Meraki

## Location Analytics

Real-time WiFi device location for analytics



## Provisioning

Rapid network configuration

### Meraki Device Information

There is no Meraki device associated with this store.  
Add a new device below via serial number.

Enter New Serial Number:

Add

### Meraki Template Information

Choose a configuration template below and click "Change".

Current Template

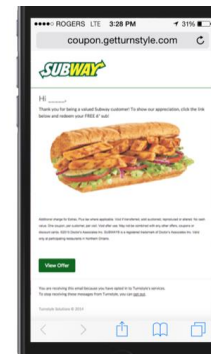
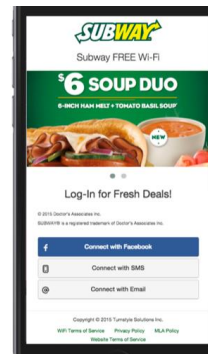
Guest Wi-Fi 30Mbps

Guest Wi-Fi 30Mbps

Change

## Captive Portal

WiFi hotspots & custom splash pages



## Mobile Apps

Proximity-based applications

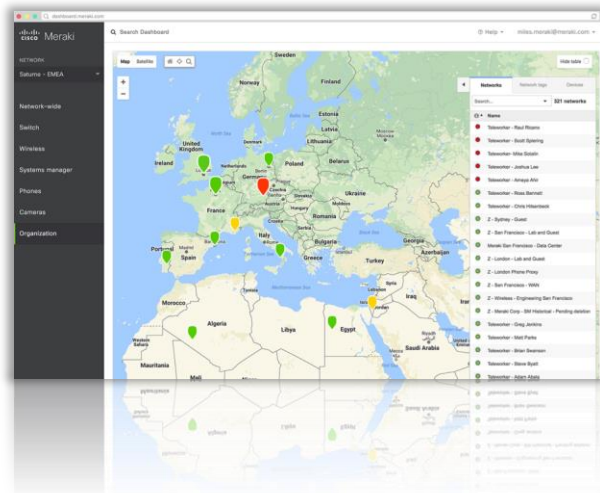


## Location Tracking

Real-time Bluetooth device location



# The Cisco Meraki Full Stack



MR

Access Points



MS

Ethernet Switches



MX

SD-WAN & Security  
Appliances



Systems Manager

Endpoint  
Management



MI

Insight



MV

Security Cameras

A COMPLETE CLOUD MANAGED IT PORTFOLIO  
SINGLE PANE OF GLASS MANAGEMENT



Thank  
you!